

## Guide pots

Steel / Stainless Steel, for serrated locking plates  
GN 187.4

### SPECIFICATION

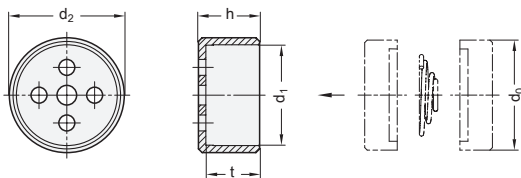
#### Version in Steel ST

blackened

#### Version in Stainless Steel AISI 303 NI

### INFORMATION

Serrated locking plates GN 187.4 (see page 1062)



## Thrust springs

Accessories for serrated locking plates

### SPECIFICATION

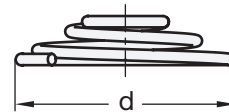
Stainless Steel AISI 301

### INFORMATION

- Serrated locking plates GN 187.4 (see page 1062)

### TECHNICAL INFORMATION

- Stainless Steel characteristics (see page A26)



\* Complete with material index of the Guide pots (ST or NI)

ST Steel      NI Stainless Steel

### GN 187.1

STAINLESS STEEL

Description	d1 +0.2/+0.3	d2 -0.5	h	t	For serrated locking plates GN 187.4	
					- d <sub>0</sub>	⚖
GN 187.1-22-*	22	26	14.5	12.5	22	20
GN 187.1-27-*	27	31	16.5	14.5	27	28
GN 187.1-32-*	32	36	19.5	17.5	32	38
GN 187.1-40-*	40	44	24.5	22.5	40	59

Weight ST

### GN 187.2

STAINLESS STEEL

Description	d	For serrated locking plates GN 187.4 - d1	
		Max. spring load in N ≈	⚖
GN 187.2-15	15	22	20
GN 187.2-18	18	27	35
GN 187.2-23	23	32	55
GN 187.2-29	29	40	45

